



Health Education – The Canadian Context

CINI 2014

Bill Dow, Dean School of Health Sciences



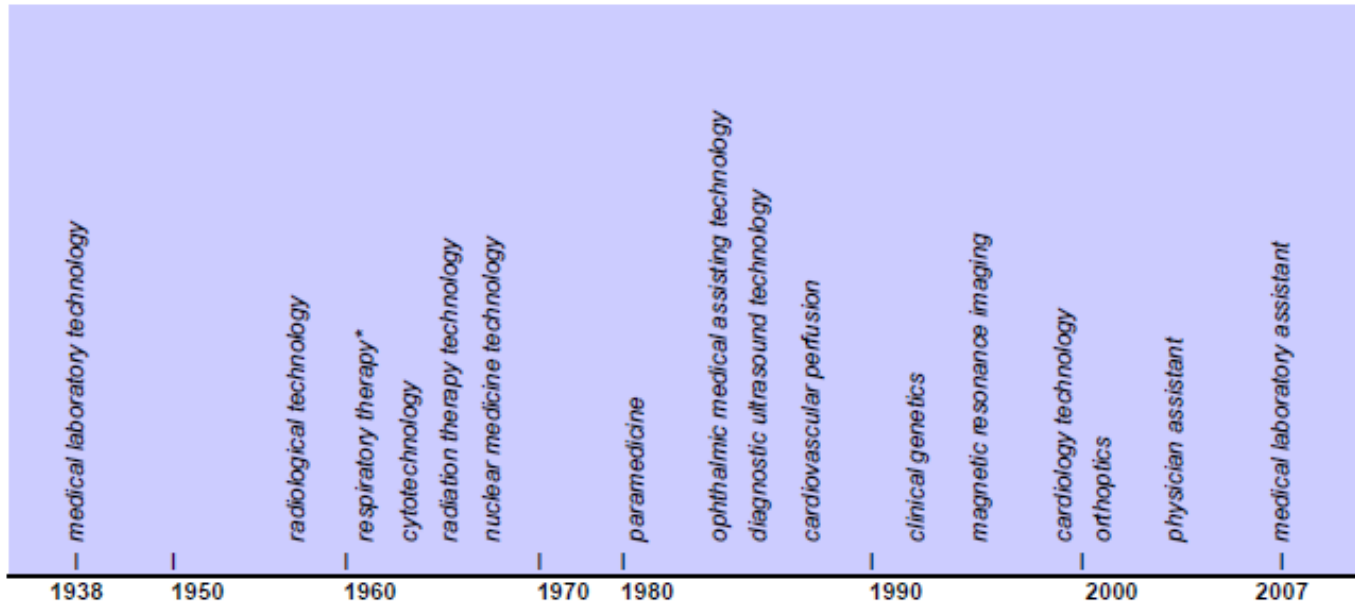
Questions to consider;

- What is most important for us to ensure successful international partnerships?
- What are the biggest obstacles to successful international partnerships?
- What is your #1 piece of advice to ensure successful design and delivery of allied health education?



CMA Conjoint Accreditation Services

History of professions involved in CMA accreditation



*The profession withdrew in 2000 from the CMA conjoint accreditation process

Why did this happen?

- Quality 
- Consistency 
- Advancing practice and expectations 

Where did we get to?

- Professional Association – set competencies, certification
- Education providers deliver education-competencies as the foundation
- Health providers partner for practice education
- Accreditation standards and framework – assesses both education and practice education. Linked to certification

So how have we done?

- Quality 
- Consistency 
- Advancing practice and expectations 

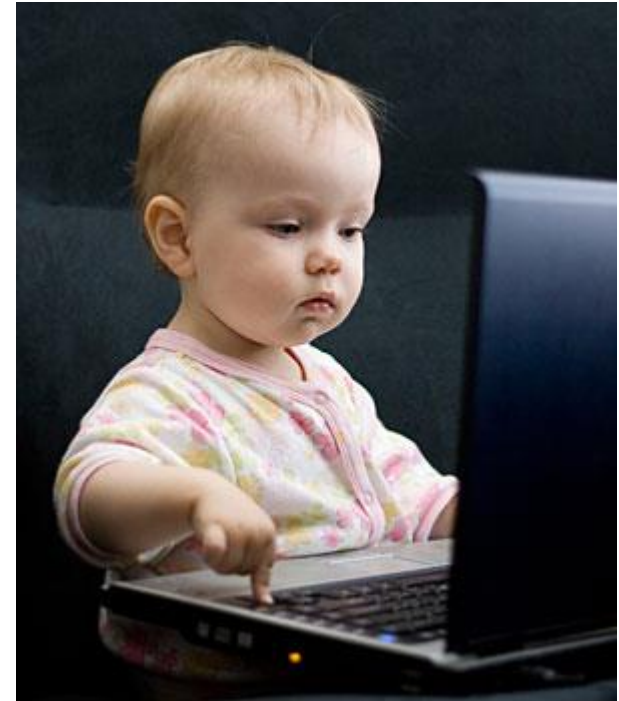
The Future

NEXT EXIT



Our context is changing

- Definition of Health?
- Definition of Quality?
- “Right person, right time, right place”
- Rapid technology disruption
- Global connections
- Affordability?





There is not one sign to follow!

- Simulation critical learning/teaching tool
- Interprofessional modeling
- Redefine the partnership with practice education
- Think health care career vs discipline
- Create “economy of scale” partnerships
- Embrace global experience as mandatory
- Pay attention to the future student expectations!!

Future Work Skills 2020

While all six drivers are important in shaping the landscape in which each skill emerges, the color-coding and placement here indicate which drivers have particular relevance to the development of each of the skills.

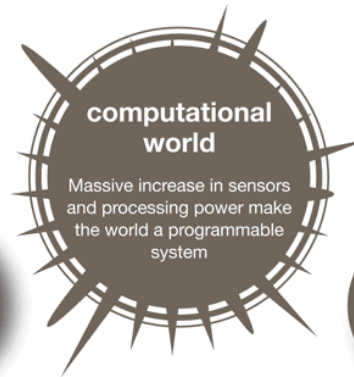
KEY



Drivers—disruptive shifts that will reshape the workforce landscape



Key skill needed in the future workforce



My Bold Proclamations! (ie. value propositions)

- Maximize alignment of skill to need and available resources
- Maximize the ability to adapt and change
- Maximize quality of care and patient safety
- Maximize the investment in our youth



Thank you

Bill_dow@bcit.ca

Twitter: Bill Dow@BillDow11

Find me on – LinkedIn